

SIMPLE LIFE

SIMPLE LIFE



Fornham Place, Bury St Edmunds, IP32

£1,545 PCM

We're delighted to present Fornham Place, part of the Marham Park village development on the outskirts of Bury St Edmunds.

With the Ashton, you get a wonderful looking property with the space and practicality ideal for family life. The downstairs consists of an open kitchen, living and dining area with aspect both to the front and rear of the house, plus French windows opening to your private garden. A downstairs WC and store cupboard provide extra space.

Upstairs, three bedrooms come off a central landing. The master comes complete with ensuite shower room, whilst a family bathroom opposite the stairs includes a shower over bath.

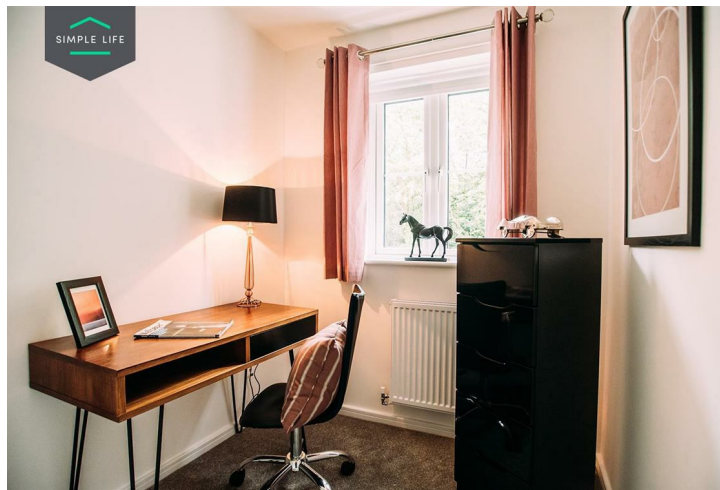
The site benefits from proximity to 20 schools rated 'Good' or 'Outstanding' by Ofsted, as well as the Arc shopping centre and Western Way Retail Parks nearby, providing a good range of shops, restaurants and leisure facilities.

Transport links are highly accessible from Fornham Place too, being just over a mile from the A14, and Bury St Edmunds train station also allowing direct services to Ipswich, Cambridge, Norwich and onwards to London.

To visit the site, use postcode IP32 6TN with the site north of Markham Parkway.

Deposit: £1780
Unfurnished
Council Tax: C
Available 30th April 2025





Key Features

- Private Driveway
- Fridge freezer
- Oven and hob
- Modern, white kitchen units
- Private back garden
- Dishwasher
- Washing machine
- Wood effect flooring downstairs
- Carpets in bedrooms and stairs

Location

